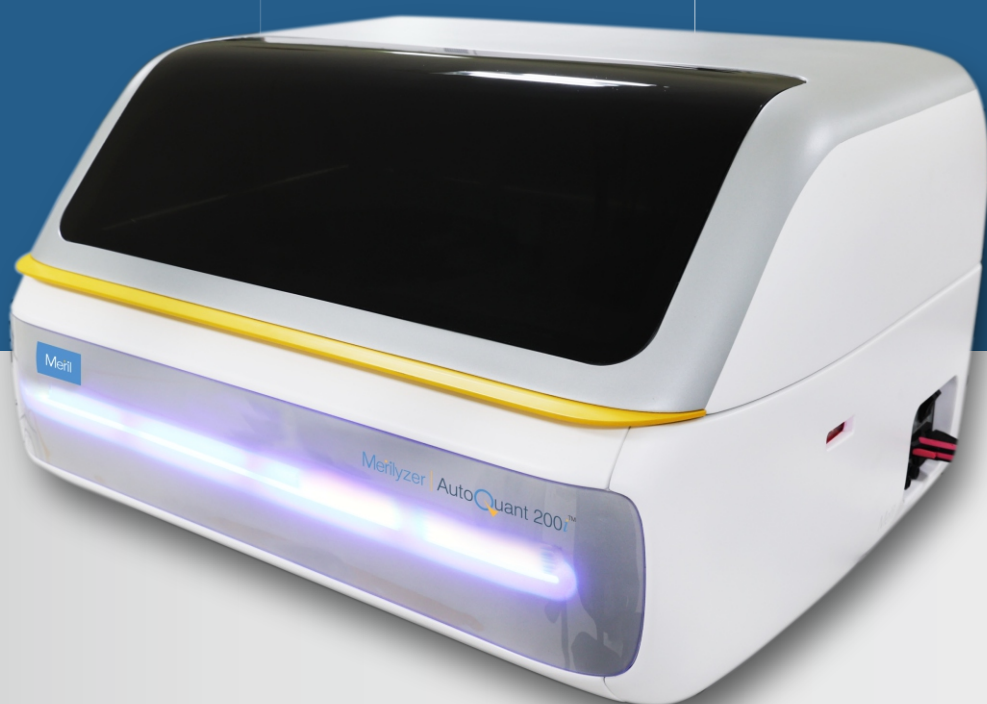


It Works, You relax...

Merilyzer

AutoQuant 200iTM



Meril Diagnostics endeavor to manufacture most of their products in-house witnesses the launch of AutoQuant 200i™ bench top fully automated analyzer with a throughput of 200 tests per hour. Its unique compact model with inbuilt laundry and cooling facility for Reagents makes it ideal for a medium size laboratory for routine tests, and as a backup for bigger laboratories. Its unique software and feature of user defined reflex action makes it user friendly Fully Auto Analyzer.

Reagent & Sample Tray

- 45 refrigerated reagent positions & 45 sampling position
- Reagent & Sample positions are bar code enabled
- Detachable Reagent Tray
- Peltier based cooling system to maintain temperature between 8 to 12°C
- 20 ml Reagent bottles with dead volume of 750 μ l
- Primary tubes size (12 mm x 75 mm) & samples cups can be used
- Continuous loading
- STAT/Controls/Calibrators can be placed at any position

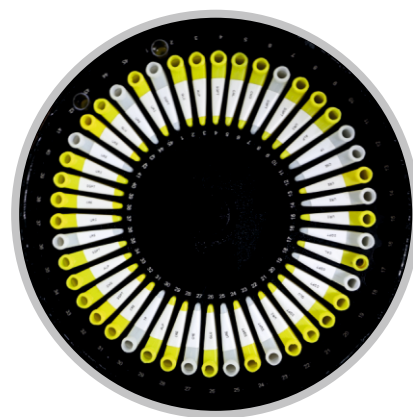


Figure. 1

Sample, Reagent Probe & Stirrer

- Hydrophobic probes which prevents cross contamination
- Capacitive level detection
- Vertical and horizontal obstruction detection facility to prevent probe crash
- Long life pipetting system with plunger driven by precised stepper motor
- Single micro coated stirrer

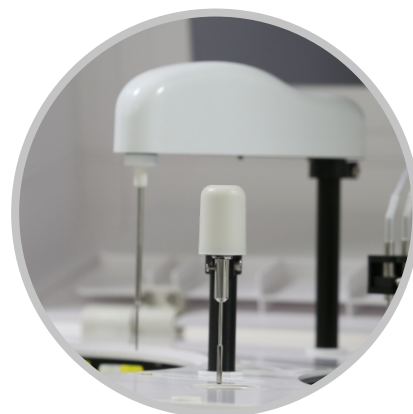


Figure. 2

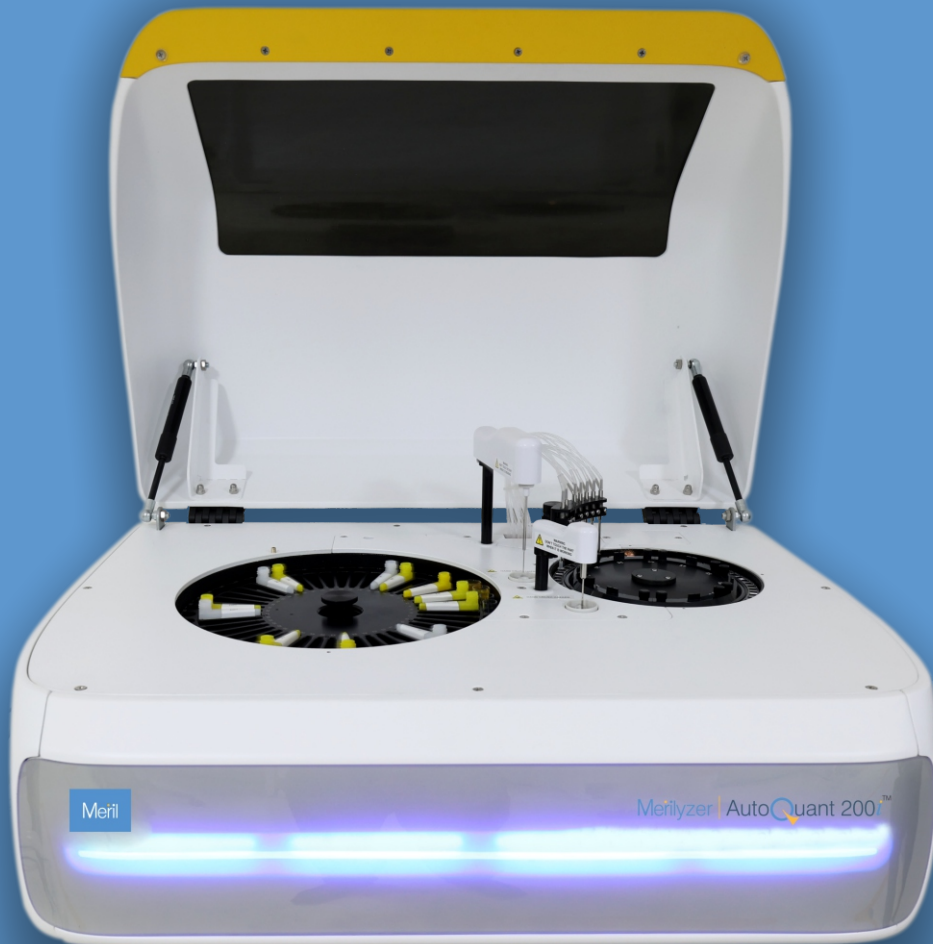
Reaction & Optical System Unit

- 60 discrete, dismountable, easily replaceable and reusable cuvettes with 6 mm optical path
- COP material which ensures high transmittance with long life
- 7-step on board washing
- Cuvettes carry over <1%
- Probe carry over <3%
- Continuous cuvette blank checking, if blank exceeds the limit, cuvette is skipped
- Low water consumption of 5 to 6 litres
- Halogen Tungsten lamp, with fibre optics
- Silicon photo-diode detector
- Photometric system of static filters with total 9 filters (340, 405, 450, 510, 546, 578, 620, 670, 700 nm)



Figure. 3

It Works, You relax...



- **Accuracy:**
On board cooling and On board laundry system
Option of three different wash for forbidden pairs to minimize the carry over
- **High Precision:**
Meril cutting edge technology for volume measurement by block piston maintenance free syringe
- **Convenience:**
Intuitive software of reflex testing and dedicated system packs
- **Flexibility:**
Processing of emergency samples can be dealt on priority with STAT function
- **Ease of operation:**
User interactive software

Cooling System

- Water based cooling system for peltier
- Prolongs the life of peltier
- Reduces Internal heat dissipation helps reducing probable electronics failure
- Ensures high onboard stability of Reagents
- Maintain 8° - 12°C temperature

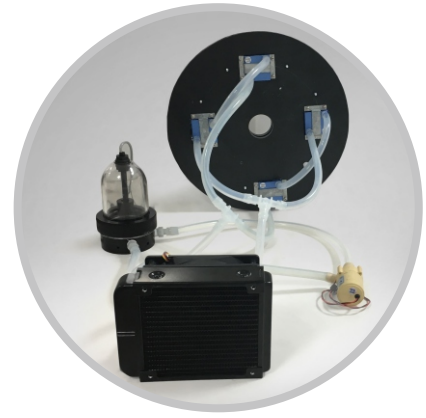


Figure. 4

Software

- Online curve for all types of chemistries
- Pre-dilution & Auto-dilution facility
- Auto rerun - Auto execution based on reagent linearity or substrate depletion
 - User defined reflex testing.
 - User defined carry over pair
- Real Time online monitoring for running status of
 - Sample tray
 - Reagent tray
 - Reaction cuvette
 - Reagent Inventory

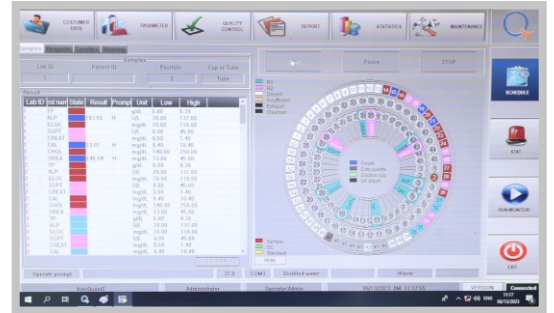
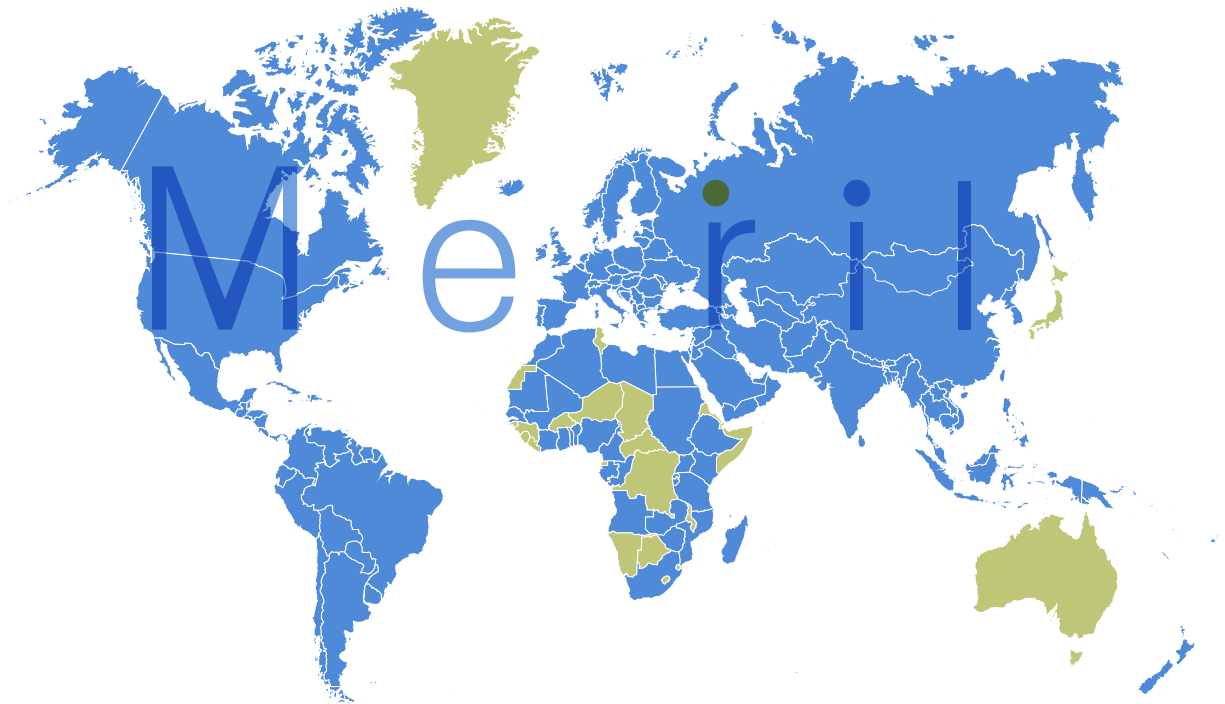


Figure. 5

Global Footprint



Meril Turkey

Imalat Ve Ticaret A. S.
6, Mimar sinan Mah.,
Cavusbasi Cad. Ozde Sok.
Aydin Eksi Is Merkezi Kat:1
Cekmekoy/Istanbul, Turkey.
T: +90 53 2272 5172

Meril South Africa

Meril SA Pty Ltd,
Unit 7, Stoney Ridge Office Park,
cnr Witkoppen and Estelle roads,
Paulshof, Johannesburg,
South Africa

Meril South America

DOC MED LTDA,
1079 - Cep: 04077-003 - Moema
Sao Paulo, Brazil
T (F): +55 11 9738 04568

Meril GmbH.

Bornheimer Strasse 135-137,
D-53119 Bonn, Germany.
T: +49 228 7100 4000
F: +49 228 7100 4001

Biochemistry Reagents

Mat Code	Material Description	Pack Size
ALBAQ1-01	ALBUMIN	6 x 20 ml
AMYAQ1-01	AMYLASE	4 x 20 ml
ALPAQ1-01	ALKALINE PHOSPHATASE	4 x 15 ml
GPTAQ1-01	ALAT (GPT)	6 x 20 / 6 x 5 ml
GOTAQ1-01	ASAT(GOT)	6 x 20 / 6 x 5 ml
BITAQ1-01	BILIRUBIN TOTAL	5 x 15 / 5 x 5 ml
BIDAQ1-01	BILIRUBIN DIRECT	5 x 15 / 5 x 5 ml
CAAAQ1-01	CALCIUM (A)	4 x 20 ml
CREAQ1-02	CREATININE	5 x 15 / 5 x 15 ml
CKNAQ1-01	CREATINE KINASE NAC	2 x 20 / 2 x 5 ml
CKMAQ1-01	CREATINE KINASE MB	2 x 20 / 2 x 5 ml
CHOAQ1-01	CHOLESTEROL	6 x 20 ml
HDLAQ1-01	HDL CHOLESTEROL (Direct)	2 x 18 / 2 x 6 ml
LDLAQ1-01	LDL CHOLESTEROL (Direct)	1 x 18 / 1 x 6 ml
CHDAQ1-01	CHLORIDE	4 x 20 ml
GGTAQ1-01	g-GLUTAMYL TRANSFERASE	1 x 20 / 1 x 5 ml
GLUAQ1-01	GLUCOSE	10 x 20 ml
LDHAQ1-01	LACTATEDEHYDROGENASE	1 x 20 / 1 x 5 ml
MAGAQ1-01	MAGNESIUM	4 x 20 ml
PHOAQ1-01	PHOSPHORUS	4 x 20 ml
TPRAQ1-01	TOTAL PROTEIN	6 x 15 ml
MTPAQ1-01	MICROPROTEIN	4 x 20 ml
TRGAQ1-01	TRIGLYCERIDE	4 x 20 ml
URCAQ1-01	URIC ACID	4 x 15 ml
UREAQ1-01	UREA	6 x 20 / 6 x 5 ml
MALAQ2-01	MICRO ALBUMIN	2 x 20 / 2 x 5ml
CRPAQ2-01	CRP	2 x 20 / 2 x 5ml
LIPAQ2-01	LIPASE	1 x 20 / 1 x 12 ml
HBAAQ2-01	HbA1c	2x15/2x5.5/1x75/4x0.5 ml

Controls & Calibrators:

CRNCNC-01	BioNorm	1 x 5 ml
CRNCNC-01	BioPath	1 x 5 ml
CRNCNC-01	BioCal	4 x 3 ml

Technical Specifications

Throughput	200 Tests / hour
ISE (Optional)	300 Test / hour
<hr/>	
System Functions	
Analysis method	End Point, Fixed Time (2-point), Kinetic/Rate
Assay modes	Colorimetry, Turbidimetry, Single and Double reagent, Multi standard, Mono and Bi – Chromatic
<hr/>	
Sample / Reagent handling	
Sample volume	2 - 50 μ l 0.1 μ l step
Sample dilution	2 to 40 times
Sample position	45 for cup/tube
Reagent position	45 for R1 and R2
Reagent volume	Reagent 1: 180-350 μ l (Adjustable in 1 μ l step) Reagent 2: 0 or 10-350 μ l (Adjustable in 1 μ l step)
<hr/>	
Reaction System	
Reaction cuvette	60 (Dismountable)
Cuvette washing	On board laundry with 7 step washing system
Water consumption	5 - 6 litres / hour
Optical length of cuvette	6 mm
Reaction volume	180 - 550 μ l
Reaction time	30 to 600 sec (Depending on the designated cycle time and number of reagents)
Reaction temperature	37 \pm 0.2° C
<hr/>	
Optical System	
Measurement	Photometry
Light source	Halogen Tungsten lamp
Wavelength	Total 9 filters (340, 405, 450, 510, 546, 578, 620, 670, 700 nm)
Absorbance range	0 - 3.0 Abs
Resolution	0.0001 Abs
<hr/>	
Calibration	K-Factor, Linear (one, two and multi point), Logit-log, Spline, Exponential, Polynomial (second, third and fourth order)
Calibration points	Multipoint curves for up to 6 points execution by repeat run list or auto execution
Auto re-run	Auto execution according to abnormal marking or range over
<hr/>	
Data Storage	Test results: Unlimited tests Reaction curve: Unlimited tests Profiles: 12 Within day as well as day-to-day X and X-R control diagram (L-J Graph)
<hr/>	
Quality Control	Real time quality control based on Multi-rule method mean, SD, %CV, R is calculated for all parameters for sample replicates
<hr/>	
Working Conditions	
Power supply	100-240 VAC, 50/60 Hz (Max. Power 250 W)
Temperature	15°C - 30°C variation during operation
Humidity	40% - 80% free from water dew formation
<hr/>	
Operation System	Windows XP, Windows 2007, Window 8, Windows 10 or Windows 10 IOT
Input and Output	
Input	RS 232 interface/computer
Output	Multi Format Printout
<hr/>	
Dimensions	736 mm (L) x 553 mm (W) x 432 mm (H)
<hr/>	
Weight	Approx. 46 kgs
<hr/>	

Meril Diagnostics Pvt. Ltd.

D1-D3, Second Floor, Meril Park, Muktanand Marg, Chala, Vapi - 396 191, Gujarat, India.
T: +91-260-2408000 F: +91-260-2408025 E: diagnostics@merillife.com

Meril Diagnostics Pvt. Ltd.

601, Midas, Sahar Plaza Complex, J. B. Nagar, Andheri East, Mumbai - 400 059, Maharashtra.
T: +91 22 3073 2400 F: +91 22 3935 0777
E: diagnostics@merillife.com W: www.merillife.com